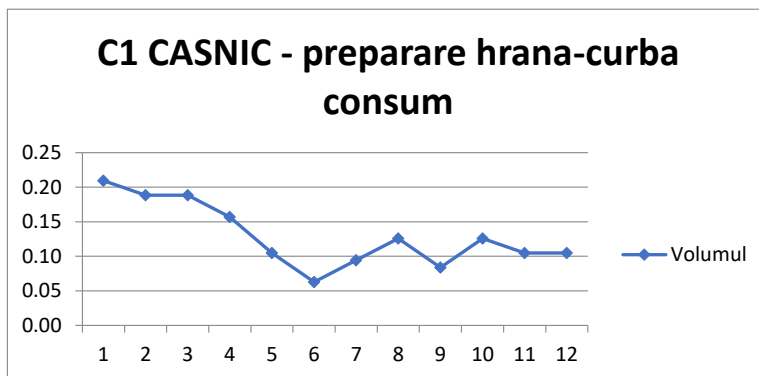


PROFILURI DE CONSUM - NOVA POWER & GAS 2019-2020

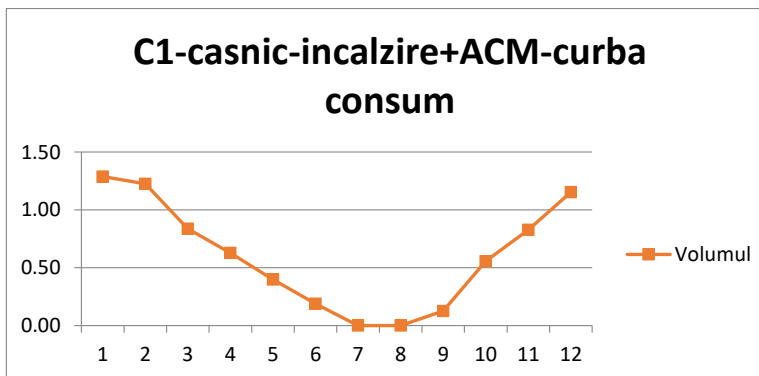
**Casnic C1 - preparare hrană**

Luna	MWh
1	0.21
2	0.19
3	0.19
4	0.16
5	0.10
6	0.06
7	0.09
8	0.13
9	0.08
10	0.13
11	0.10
12	0.10



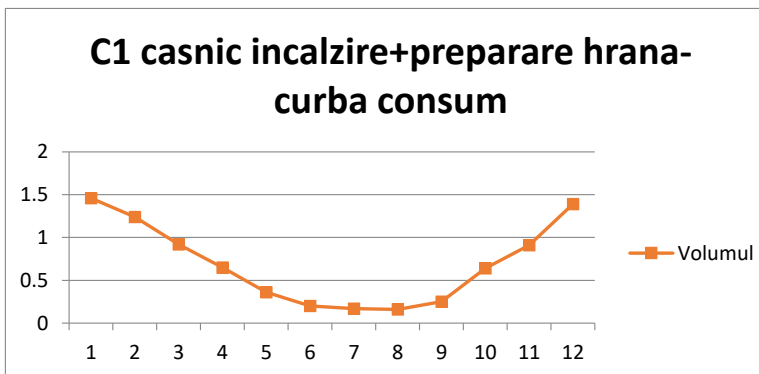
**Casnic C1 - încălzire și ACM**

Luna	MWh
1	1.29
2	1.23
3	0.84
4	0.63
5	0.40
6	0.19
7	0.00
8	0.00
9	0.13
10	0.56
11	0.83
12	1.15



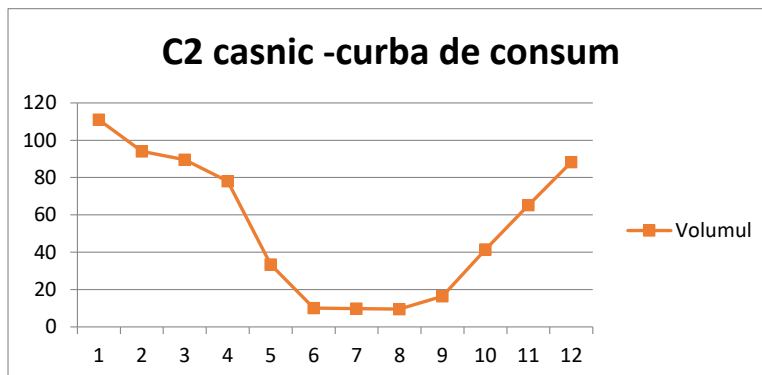
**Casnic C1 - încălzire și ACM**

Luna	MWh
1	1.46
2	1.24
3	0.92
4	0.65
5	0.36
6	0.2
7	0.17
8	0.16
9	0.25
10	0.64
11	0.91
12	1.39



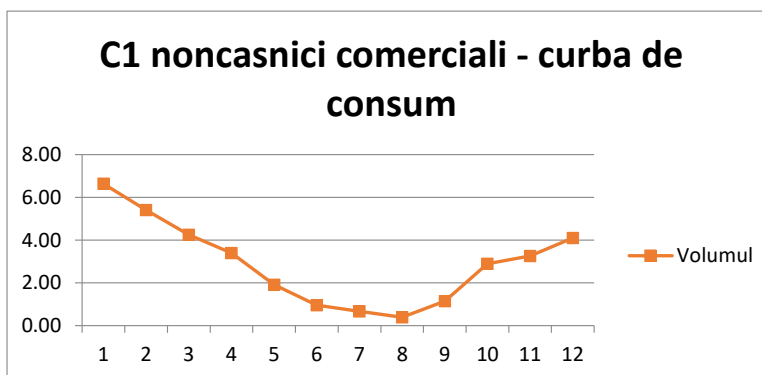
**C2 casnic - imobile cu destinatie locuinta**

Luna	MWh
1	110.972
2	94.028
3	89.577
4	78.005
5	33.441
6	10.103
7	9.784
8	9.565
9	16.365
10	41.53
11	65.226
12	88.227



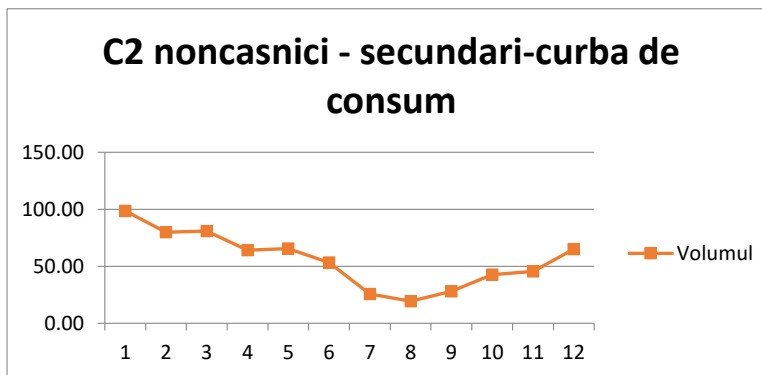
**C1 - noncasnici comerciali**

Luna	MWh
1	6.64
2	5.41
3	4.26
4	3.40
5	1.91
6	0.96
7	0.66
8	0.39
9	1.14
10	2.89
11	3.26
12	4.10



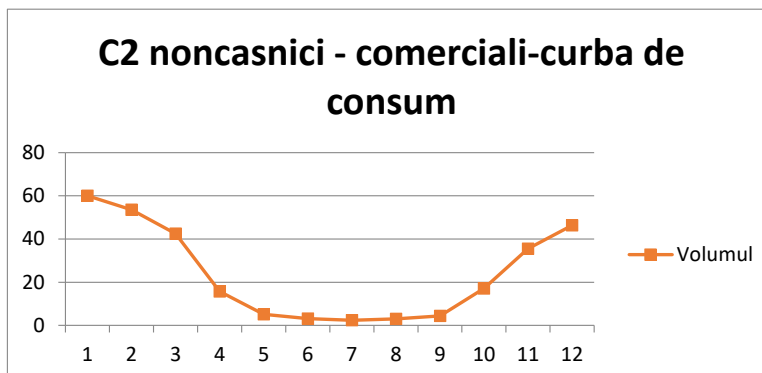
**C2 - noncasnici secundar**

Luna	MWh
1	98.61
2	79.78
3	80.86
4	64.03
5	65.52
6	53.27
7	25.75
8	19.35
9	28.09
10	42.64
11	45.34
12	65.08



**C2 - noncasnici comerciali**

Luna	MWh
1	60.04
2	53.62
3	42.52
4	15.65
5	5.15
6	3.15
7	2.35
8	3.05
9	4.38
10	17.12
11	35.5
12	46.3



**C2 - noncasnici tertiar**

Luna	MWh
1	50.33
2	40.62
3	32.74
4	19.29
5	11.63
6	6.92
7	5.06
8	8.39
9	8.03
10	20.42
11	32.39
12	39.96

